



Parys Primary School
NATURAL SCIENCES AND TECHNOLOGY
Test

14 March 2025

Test Setter: Me. F.F. du Plooy

Moderator: Me. R. de Swardt

Name and surname: _____

/40

Grade 4E

INSTRUCTIONS

- Read the questions with care.
- Answer all the questions on the paper.
- Work neatly and write legible with a pencil.
- Read three times, think twice and write once.
- You have **60 minutes** to complete the paper.

Low order (20)	Total	
1	6	
2	8	
3	6	
Middle order (14)		
4	4	
5	10	
High order (6)		
6	6	

LIVING AND NON-LIVING THINGS

QUESTION 1 (Low order

[6]

Choose the correct answer and circle the correct letter.

1.1 How many life processes can be carried out by living things?

- A. 9
B. 7 (1)

1.2. Dead things that were once living.

- A. Leaves on a tree.
B. Wood burning in a fire. (1)

1.3 Being able to see, hear, touch, taste or smell things.

- A. Breathing
B. Sensing (1)

1.4 The process used by the body to get rid of waste products.

- A. Excreting
B. Breathing (1)

1.5 It is when a seed starts to grow.

- A. Germination
B. Dormant (1)

1.6 It looks like it is not living, but can grow with the right food.

- A. Soil
B. Yeast (1)

QUESTION 2 (Low order)

[8]

Underline the correct answer between brackets.

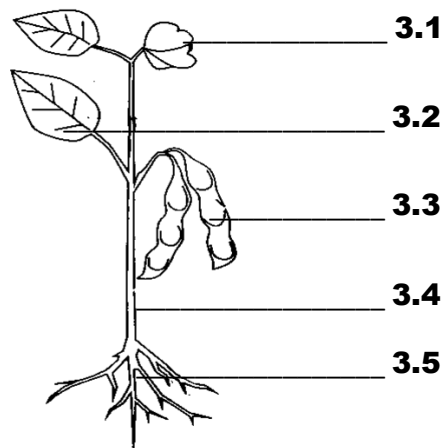
- 2.1 A plant consists out of **(three, four, five)** parts. (1)
- 2.2 The geranium can grow from a **(seed, root, cutting)**. (1)
- 2.3 A plumule is the first **(root, shoot, flower)** of a seedling. (1)
- 2.4 The stem of a plant holds the **(seeds, roots, flower)** (1)
- 2.5 The function of the flower is to **(make food, attract insects, absorb water)**. (1)
- 2.6 The head of an animal is part of the **(three, four, five)** parts of the body. (1)
- 2.7 Animals have **(coverings, limbs, structures)** to help them move. (1)
- 2.8 A tortoise has **(fur, scales, a shell)**. (1)

QUESTION 3 (Low order)

[6]

Study at the sketch of the plant. **Give a suitable heading** and **write the numbered parts in the spaces below** the sketch.

_____ (1)



- 3.1 _____ (1)
- 3.2 _____ (1)
- 3.3 _____ (1)
- 3.4 _____ (1)
- 3.5 _____ (1)



QUESTION 4 (Middle order)

[4]

Read the questions and answer.

4.1 What does the structure of an animal consist of? _____

_____ (2)

4.2 What covers the fish eagle and how does he move? _____

_____ (2)

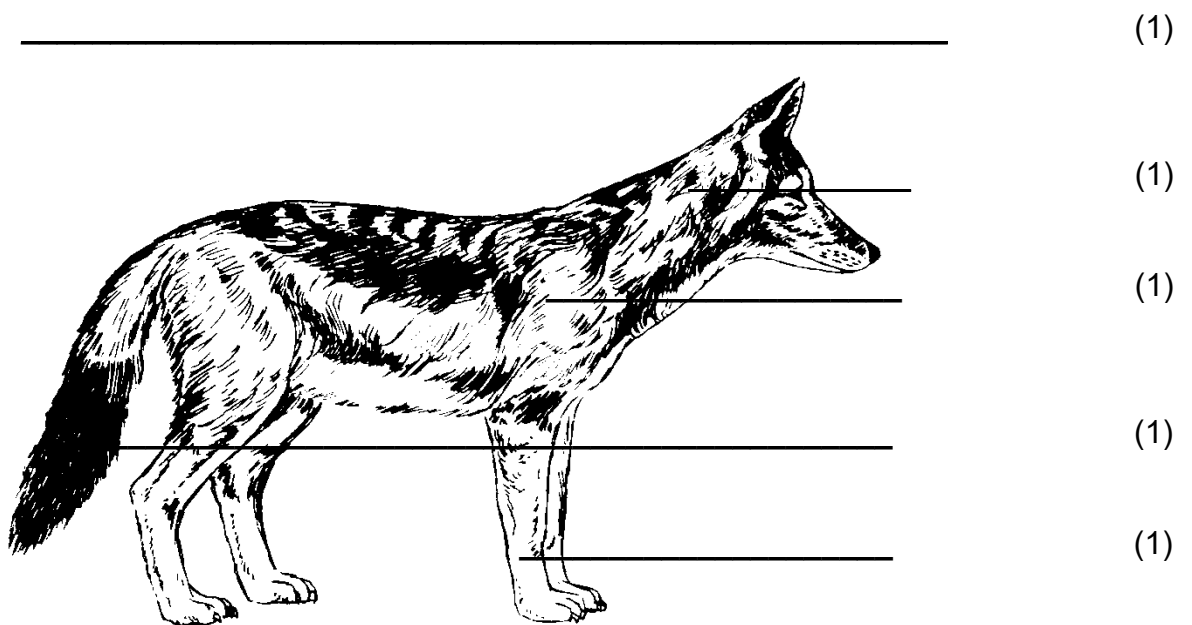
QUESTION 5 (Middle order)

[10]

Look at the **STRUCTURE** of the red fox.

5.1 Give a **HEADING**.

5.2 **LABEL** the parts **next to the label lines**. (Remember in **PRINT!!!**)



5.3 Answer the following questions.

5.3.1 How many limbs does the fox have? _____ (1)

5.3.2 List 4 sense organs.

(4)

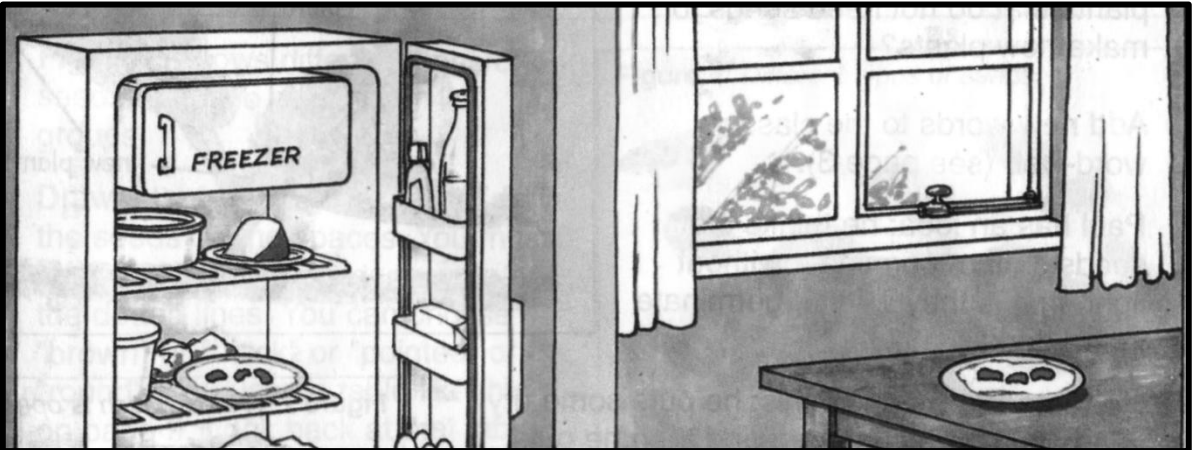
QUESTION 6 (High order)

Study the pictures and information below.

Apply your knowledge of what plants need to grow. Answer the questions.

A. Paul's seeds are in a freezer.

B. Lebo's seeds are near the window sill.



6.1 Who is right? Paul or Lebo? Give a reason for your answer.

_____ (1)

6.2 Write true answers by completing this sentence.

Seeds need _____

to _____ (5)