

Primary School Paris

Engels Memro

GRAAD 5
NATUURWETENSKAPPE EN TEGNOLOGIE
MAART 2025
TYD: 1 UUR
PUNTE: 50

NAME AND SURNAME: _____

SCHOOL: _____

CLASS: 5 _____

POINT: _____/50

Order	Question	Point	%
LO	1, 2, 5	28	56% (50%)
MO	3, 4	21	42% (35%)
HO	6	6	12 (15%)
	Total	50	100%

QUESTION	POINT	POINT RECEIVE
1	5	
2	12	
3	15	
4	6	
5	6	
6	6	
TOTAL	50	

--	--

INSTRUCTIONS

1. Read all the questions carefully before answering them.
2. Answer all the questions.
3. Write neatly and legibly.
4. Write your answer in the open spaces provided on the question paper.

SECTION A

QUESTION 1

Read each question or statement and circle the correct letter A, B, C or D, which indicates the correct answer.

- 1.1 What do plants **not** need to make food? (1)
- A Carbon dioxide
- B Oxygen ✓
- C Water
- D Sunlight energy
- 1.2 A food chain always starts with a (1)
- A Herbivore
- B Plant ✓
- C Carnivore
- D Omnivore
- 1.3 What are the phases that a living thing goes through in its life called? (1)
- A Pollination
- B Fertilization
- C Life cycle ✓
- D Germinate
- 1.4 **Producers** are plants that manufacture or make their own food. (1)
- A Where ✓
- B Untrue
- 1.5 **Shell structures** are formed by attaching different parts or supports in triangular shapes? (1)
- A Where
- B False ✓

QUESTION 2

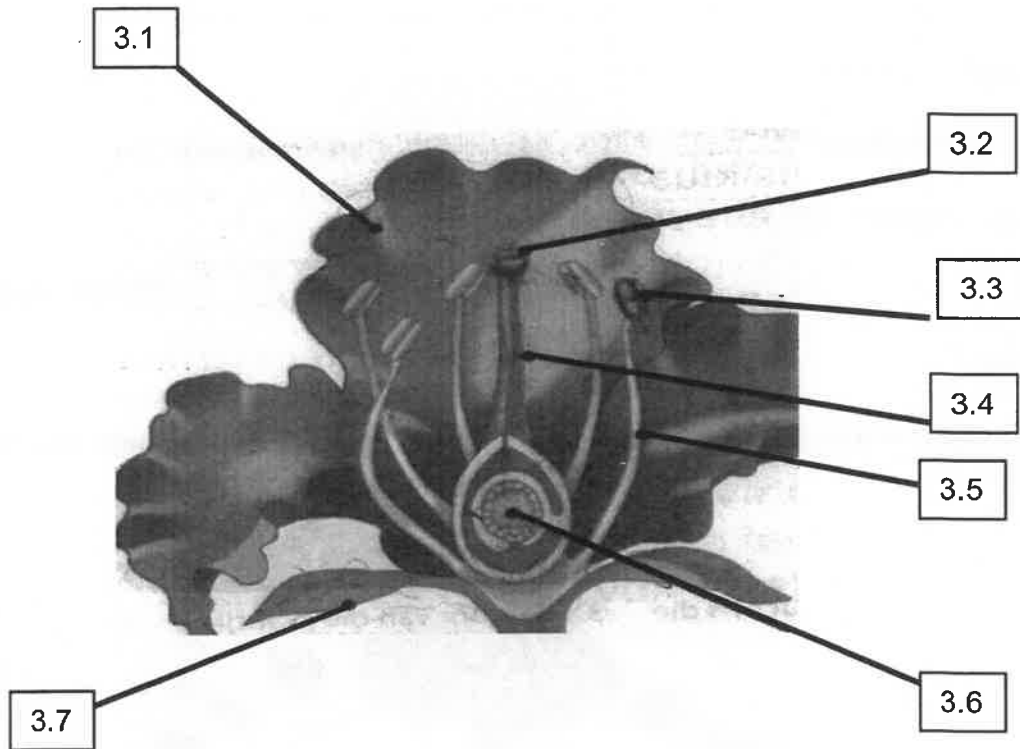
Define (explain) the following words:

- 2.1 Struts: Strong structures that can support a lot of weight.
_____ (2)
- 2.2 Nutrients: Are substances that help living things grow.
_____ (2)
- 2.3 Fertilization: Is when male cells in the pollen and the eggs in the female
part of the flower fuses to form seeds. (2)
- 2.4 Pollination: Is when pollen is transferred from the male part of a plant to the female
part.
part is transferred. (2)
- 2.5 Germinate: Is to form and grow a shoot, or to develop a new plant from a seed.
form. (2)
- 2.6 Shell structure: A structure with a strong outer layer that holds itself upright.
_____ (2)

TOTAL QUESTION 2: [12]

QUESTION 3

Study the following sketch and answer the questions that follow.



Name the following numbers on the labels of the sketch above. And explain what role each one plays in pollination and fertilization.

- 3.1 Caption: Petal (1)
Attract birds and insects to the flower.
_____ (2)
- 3.2 Caption: Stigma (1)
The sticky female part that collects pollen. The pollen then makes a thin
tube, which is known as the pollen tube, into the ovary of the flower. (2)
- 3.3 Caption: Anther (1)
The male part that makes pollen. Pollen must reach the stigma.
Insects and birds and wind help carry the pollen from flower to flower. (2)

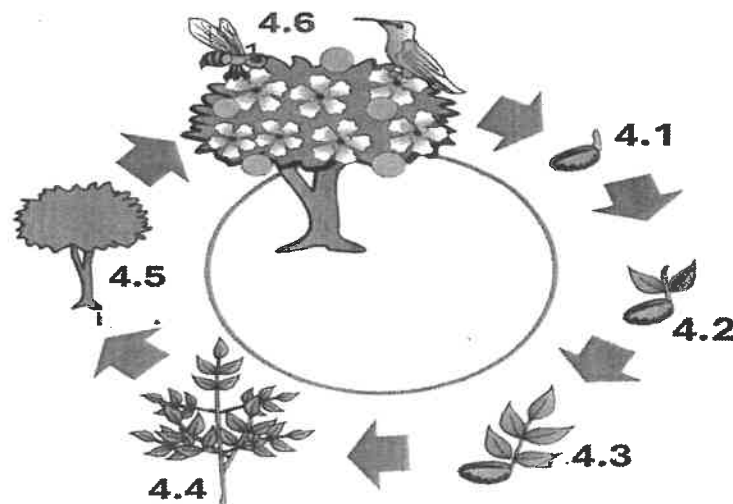
3.4 Caption: Style (1)
Supports the stigma and leads to the ovary. (2)

3.6 Caption: Ovary (1)
Keep the seed buds that will form if fertilization has occurred, the ovary grows to form a fruit. (2)

TOTAL QUESTION 3: [15]

QUESTION 4

Study the picture of the life cycle of a flowering plant below and answer the questions that follow.



4.1 What process occurs when the bee and the bird visit the mature tree at section 4.6?
Pollination (2)

4.2 What happens during the stage at number 4.1
Seeds from the fruit fall to the ground or are dispersed by the wind, insects or birds. (2)

4.3 What do we call the first small root that appears at the section at number 4.2?
Germinated seed with leaves. (2)

TOTAL QUESTION 4: [6]

QUESTION 5

Look at the pictures below and answer the questions that follow.



blouwildebees

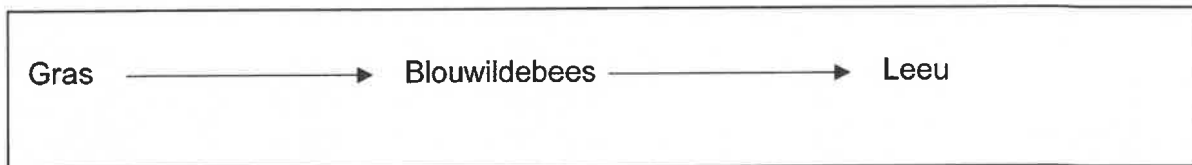


leeu



gras

5.1 Arrange the pictures and write the names in the correct order to form a food chain. Draw the food chain. Remember to add the arrows.



(4)

5.2 What do the arrows in the food chain indicate?

The energy that passes from one organism to another.

(2)

TOTAL QUESTION 5: [6]

QUESTION 6

Write a **paragraph** about the **life cycle** of an animal.

6.1 All living things must reproduce. ✓ This means that they produce more living things as they should make themselves. ✓ A plant or animal can at any stage of its life life cycle. ✓ Animals can die because they get sick or because they are hunted. ✓ Sometimes they get very old and their bodies no longer work as they should. ✓ Reproduction ensures that different living things don't become extinct

TOTAL QUESTION 6: (6)

--	--

